

DOING OUR BUSINESS WE CARE FOR YOU

TROPIC-GROUP.RU

FRESH FRUIT & VEGETABLE IMPORT • LOGISTICS • RETAIL

MANDARIN

Origin country	Variety	Type of package	Size	Unit weight
Morocco, South Africa, Argentina, Pakistan, Turkey	Clementine, Satsumas, Nova, Clementville, Kinnow, Nadorcott, Dubeshi, Okitsu, Mihowase	carton box wooden box plastic box	minimum diameter 54+ mm clementines 50+ mm	10 kg

DESCRIPTION OF GOODS

- clean fresh fruits with thin porous dry (not wet) skin of orange colour typical of the variety. Slight detachment of the peel is the sign of the ripeness and is not qualified as defect;
- minimum juice content: 40% (clementines), other varieties -33%;
- minimum sugar/acid ratio - 7,0:1 (clementines), other varieties - 7,5:1

CLASSIFICATION / DEFECTS

1st GRADE	2nd GRADE
<p>Mandarin of this grade must be characteristic of the variety and/or commercial type. The following slight defects, however, may be allowed, provided these do not affect the general appearance of the produce, the quality, the keeping quality and presentation in the package:</p> <ul style="list-style-type: none"> • a slight defect in shape; • slight defects in colouring, including slight sunburn; • slight skin defects, provided they do not affect the flesh; • slight skin defects occurring during the formation of the fruit, such as silver scurfs, russets or pest damage; • slight healed defects due to a mechanical cause such as hail damage, rubbing or damage from handling; • slight detachment of the peel. 	<p>This grade includes mandarins that can't be included in the 1st grade but satisfies the minimum requirements specified in the introduction.</p> <p>The following defects may be allowed, provided the citrus fruit retains its essential characteristics as regards the quality, the keeping quality and presentation:</p> <ul style="list-style-type: none"> • defect in shape; • defects in colouring, including slight sunburn; • progressive skin defects, provided they do not affect the flesh • skin defects occurring during the formation of the fruit, such as silver and brown scurfs, russets by pest damage; • healed defects due to a mechanical cause; • partial detachment of the peel; • smooth skin. <p>Tolerances - no more than 10% of the shipment (1 grade)</p>
OUT OF STANDARD	WASTE
<ul style="list-style-type: none"> • with severe mechanical damages of skin not affecting the flesh (damaged fruit-stalk); • colored less than one third of the surface of the fruit; • rough skin; • severe defects in shape (bruising); • severe defects of skin not qualify for inclusion in the II grade; • severe detachment of the peel; • with slight signs of shrivelling and dehydration; • ring-cracking; • skin defects occurring during the formation of the fruit, such as silver scurfs, russets or pest damage; • contaminated, with chemical residues; • with molded fruit-stalk <p>Tolerance - no more than 3% of the shipment.</p>	<p>Mandarins not corresponding to minimum requirements (Introduction) and:</p> <ul style="list-style-type: none"> • fruits of dark green colour; • rotten, contaminated (sowing by mold fungi spores); • with progressive agricultural diseases; • with severe mechanical damages of skin affecting the flesh; • damage caused by low temperature/ frost or heat; • damage caused by pests

No more than 10% of fruits which the size is less than the minimal allowed size

1st GRADE

Photo 1: 1st grade mandarin

Photo 2: 2nd grade mandarin

Photo 3: packaging (bulk 10 kg)



2nd GRADE DEFECTS



Photo 4: defect in shape Photo 5: sunburn Photo 6: healed defects due to a mechanical cause
Photo 7: silver scurfs Photo 8: smooth skin

OUT OF STANDARD



Photo 9: damaged fruit-stalk Photo 10: rough skin/ creasing Photo 11: contaminated, with chemical residues
Photo 12: ring-cracking Photo 13: shrivelling and dehydration

WASTE

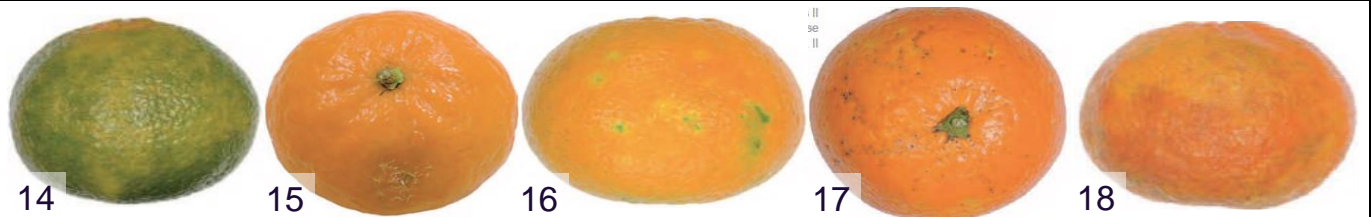


Photo 14: presence of green colour Photo 15: rotten Photo 16: damage caused by pests
Photo 17: agricultural diseases Photo 18: frozen